

TO REQUEST A QUOTATION
COMPLETE AND FAX THIS
FORM TO 888-544-0168



Sheaves Inc, 195 Leonard Drive, Groton CT 06340

Tel. 866-344-6774 - Fax 888-544-0168

sales@eSheaves.com

Name: _____
 Title: _____
 Company: _____
 Address: _____
 City, State, Zip _____
 Telephone: _____
 Fax: _____
 email: _____

QUANTITY REQUIRED _____

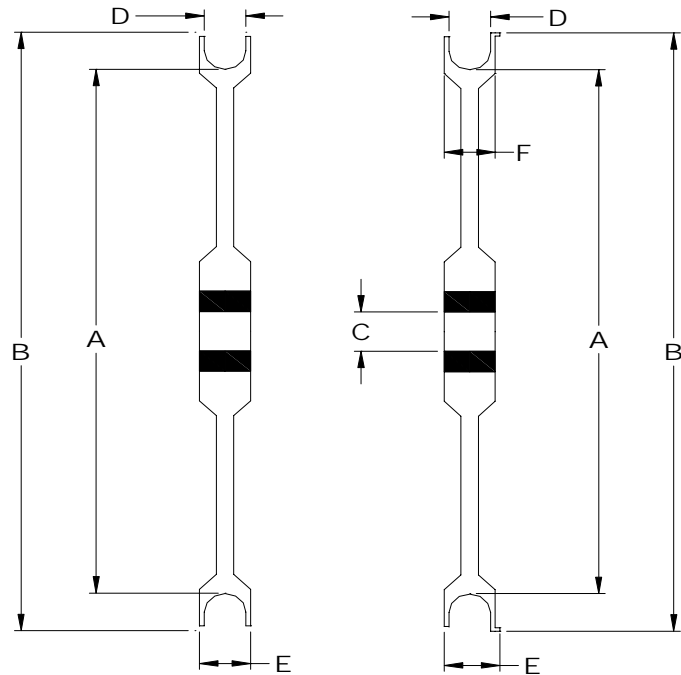
DATE REQUIRED _____

APPLICATION _____

CRITICAL DIMENSIONS

- A _____ Root diameter
- B _____ Outside Diameter
- C _____ Bearing or Bore
- D _____ Groove Width
- E _____ Overall Width
- F _____ Active Width

GROOVE STYLE _____



U-GROOVE
NON-NESTING

A



U-GROOVE
NESTING

B



V-GROOVE

C



V-GROOVE
W/RADIUS

D



FLAT W/
STRAIGHT
SIDES

E



FLAT W/
SLOPING
SIDES

F



TRACKER
GROOVE

T

DO YOU HAVE A MATERIAL CHOICE?

- Gar-Dur UHMW
- Generic UHMW
- HDPE
- Ceram P
- Delrin
- Polyamide (Nylon)
- MoS₂ Filled Nylon

SEE LIST ON REVERSE SIDE

- Aluminum
- Hard Anodized
- Ceramic Coated
- Steel
- Hardened
- Ceramic Coated
- Other

ANY SPECIAL CONDITIONS?

- High Temperature _____
- High Speed (RPM) _____
- High Loads _____
- High Abrasion _____
- Conductivity _____
- Moisture _____
- Chemical _____

ADDITIONAL COMMENTS

